



542 3Rd Street, Lake Elsinore, CA 92530

TEL: 951-245-8669, FAX: 951-245-5481



ACURA RSX

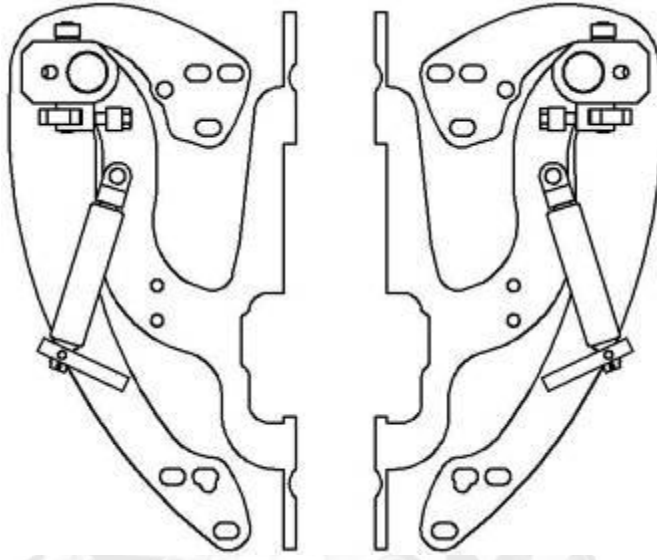
U.S. PATENTS

#6,808,223; #6,845,547; #7,140,075; #7,059,655

PATENTS AGGRESSIVELY ENFORCED!

**PLEASE CAREFULLY READ ALL INSTRUCTIONS BEFORE
ATTEMPTING TO INSTALL THIS PRODUCT.**

**FOR QUESTIONS PLEASE
CONTACT US AT (951) 273-1069**



THIS KIT INCLUDES:

- 16 M8-1.25X30MM BOLTS WITH WASHERS
- 2 SHOULDER BOLTS WITH WASHERS
- 2 PINS
- RIGHT AND LEFT HINGE ASSEMBLY
- 2 SHOCKS 720 PSI

TOOLS REQUIRED FOR INSTALLATION:

	<ul style="list-style-type: none"> ➤ AIR RACHET, GRINDER AND CUTTER.
	<ul style="list-style-type: none"> ➤ 7MM, 8MM, 10MM, 11MM, 13MM, SOCKETS AND EXTENSION.
	<ul style="list-style-type: none"> ➤ FORK AND PHILLIP'S SCREW DRIVERS
	<ul style="list-style-type: none"> ➤ SPACERS FOR THE DOOR GAP.
	<ul style="list-style-type: none"> ➤ 3/16 ALLEN WRENCH
	<ul style="list-style-type: none"> ➤ 1/4 TORX BIT
	<ul style="list-style-type: none"> ➤ 9/16 WRENCH
	<ul style="list-style-type: none"> ➤ LOCKTITE RED

OTHER TOOLS MAY BE NEEDED DEPENDING ON YOUR VEHICLE.

(Note: The pictures on the manual are for reference only they may not match your vehicle.)

1) Disconnect the battery.

2) Remove fender:

Remove all Phillip's screws from the wheel well.



After removing the fasteners around the wheel well pull back on it and remove (1) 10mm bolt securing the fender to the bumper.



After removing the 10mm bolt, pull back on the bumper to gain access to (2) 10mm bolts securing a plastic bracket. After removing the top bracket remove the other (2) bolts securing the fender to the body.



After removing the fasteners on the wheel well, pull down on the skirt and remove the 10mm bolt securing the fender to the body.



Open the door and remove (1) 10mm bolt located at the point where the windshield pillar meets the fender.

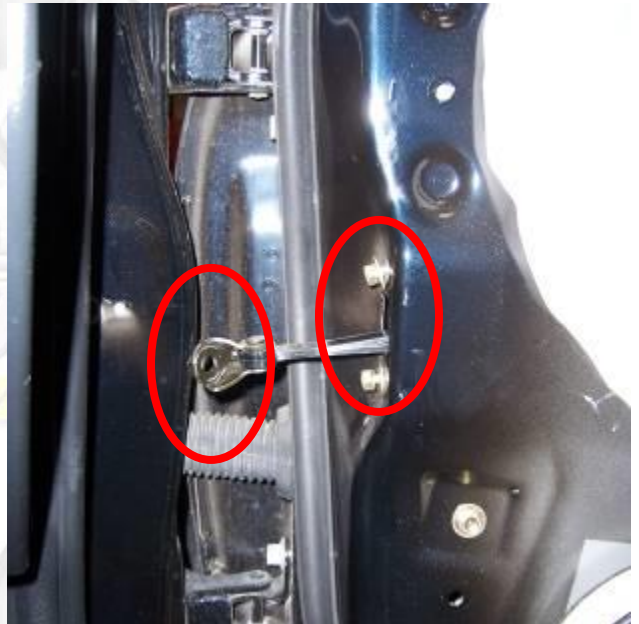


Remove the bolts located on the top of the fender. Now you will be able to carefully remove the fender.



3) Remove the door catch:
Open the door and remove bolts from the body and from the door. Push the door catch inside the door.

You will need to remove the door panel to retrieve the door catch.



4) You will need to remove the door panel:
Remove all the covers and screws, you will find (2) on the bottom side of the arm rest and (2) under the cover of the door handle.



After removing the two screws under the door handle cover you will be able to pull the assembly out and disconnect the cable that opens the door and the wire harness that control the lock.



Now you will be able to carefully remove the door panel.

Use the fork to remove the speaker.



Remove (1) wire clip (small circle) this will allow you to remove the door catch and give you more wire slack.



You will have to extend the wires to the mirrors to get extra wire slack.



Close the door and cut the factory wire boot in half, open the door and pull on the wires as shown.



5) Close door and use painter's tape to secure the door in preparation for factory hinge removal.

You will need a 12mm socket to remove the factory hinges.

Hint (You can make your spacer out of paint sticks and about 8-10 turns of blue painters tape)*



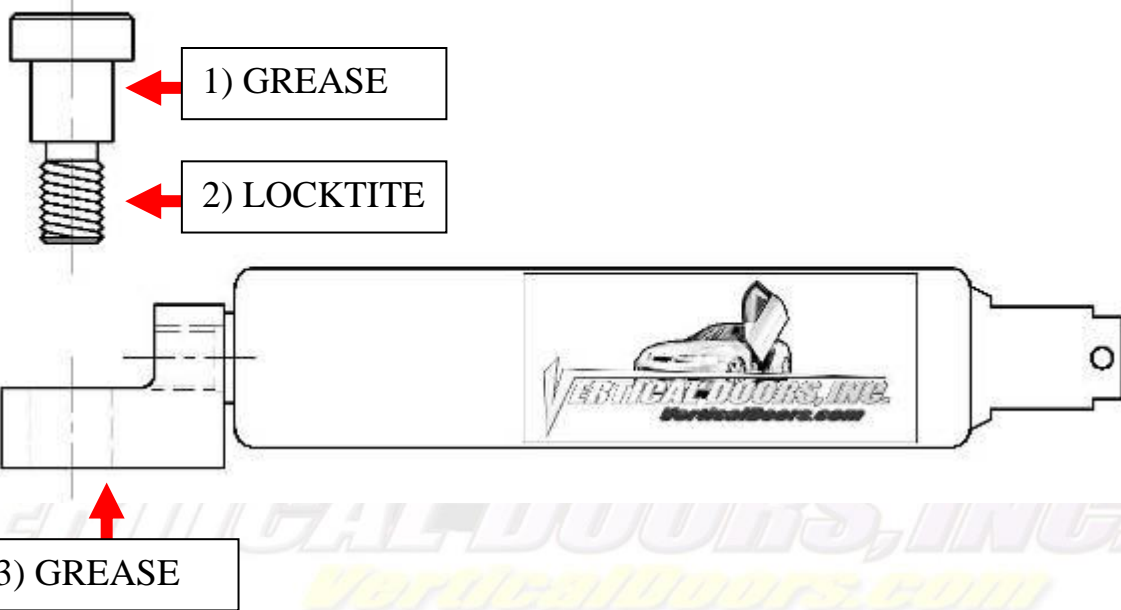
6) Install new Vertical Doors Inc. system:

In order for the vertical hinge to sit flat against the apron you will have to flatten the material extruding from the apron. (used hammer to flatten surface)

Also remove the wire clip to loosen the wire harness.

Hint Tighten the bolts on the door first and then install the bolts on the body.*



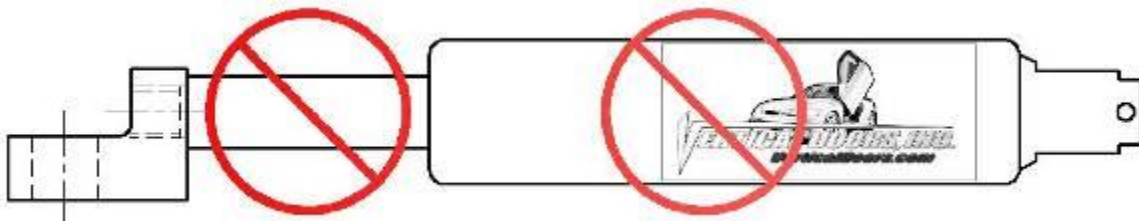


***IMPORTANT STEP: DO NOT SKIP THIS STEP. THIS STEP IS CRUCIAL IN YOUR INSTALLATION PROCESS, IF THIS STEP IS NOT COMPLETED WHEN INSTALLING THE VERTICAL DOOR KIT; ALL WARRANTIES ARE VOIDED, AND MAY CAUSE FUTURE PROBLEMS WITH YOUR VERTICAL DOOR SYSTEM.**

1ST, make sure you put grease on the body of shoulder bolt where the arrow is pointing.

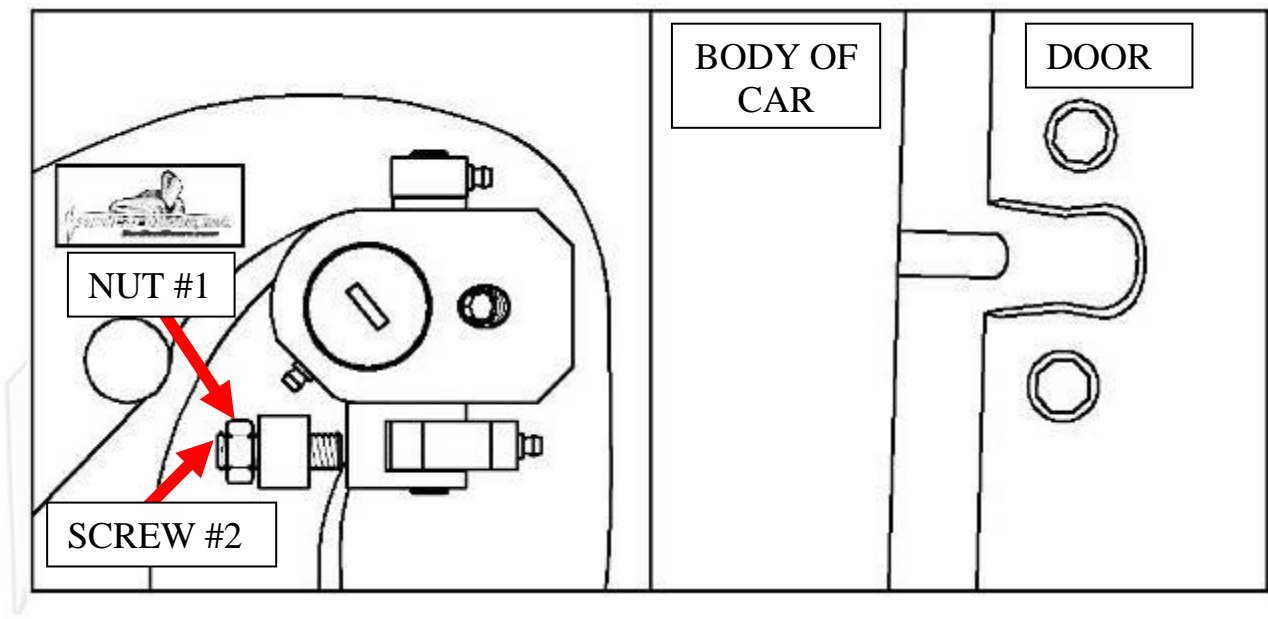
2ND, make sure you put red Loctite, where the arrow is pointing, on thread of shoulder bolt.

3RD, make sure you put grease on the bottom side of the shock end.



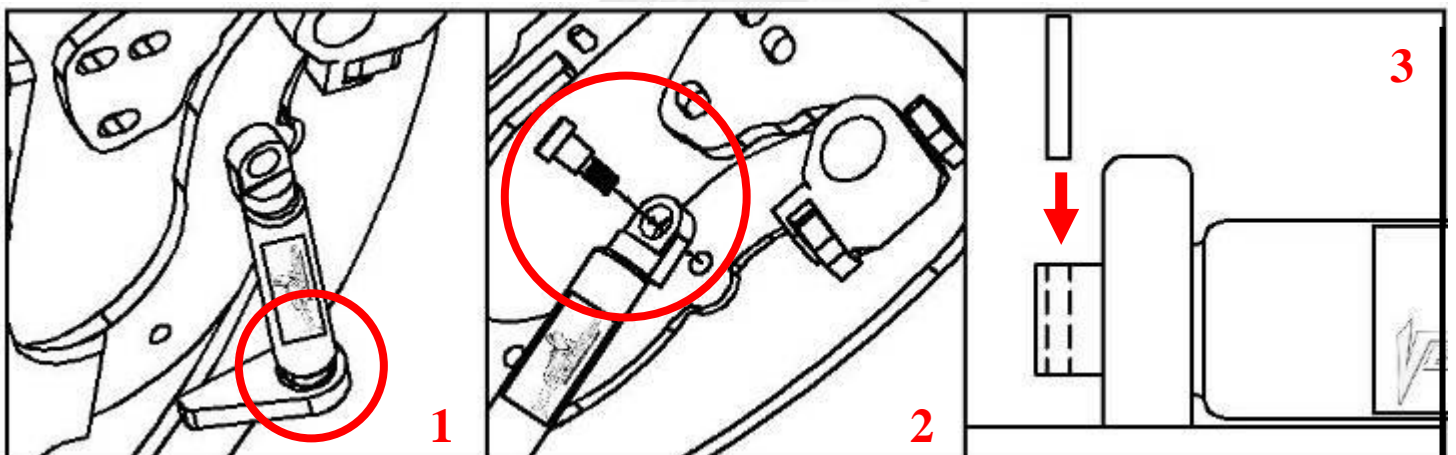
WARNING! THE USE OF ANY TYPE PLYERS, PAINT OR FOREIGN MATERIALS ON THE SHOCK'S BODY OR SHAFT WILL VOID THE WARRANTY.

7) Once hinge is locked in place, break nut #1 then turn Allen set screw #2 on fig until it hits the block then open the door and continue to adjust until the door matches with the striker, open and close door making sure it closes like factory.



Hint(leave #1 nut loose until shock is installed Allen set screw will have to be re-adjusted after shock is installed.*

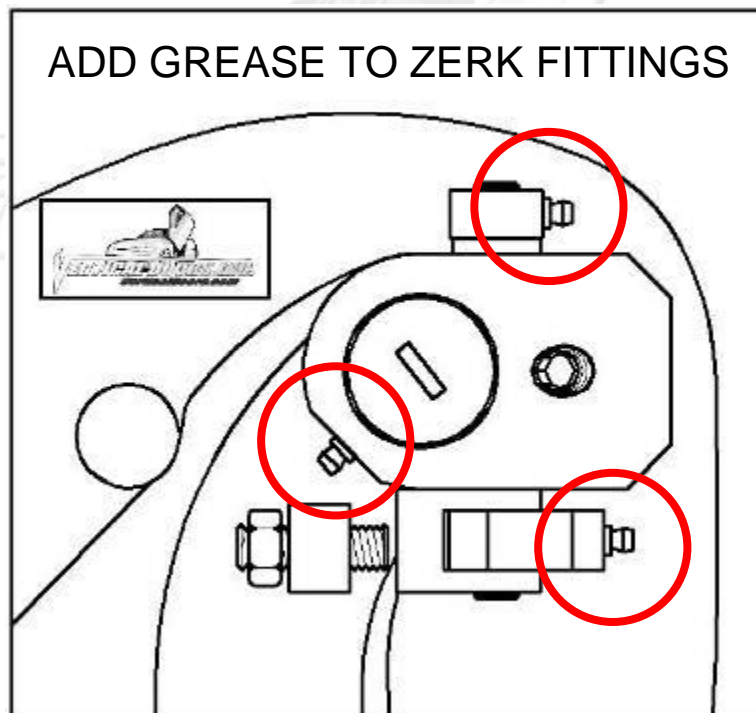
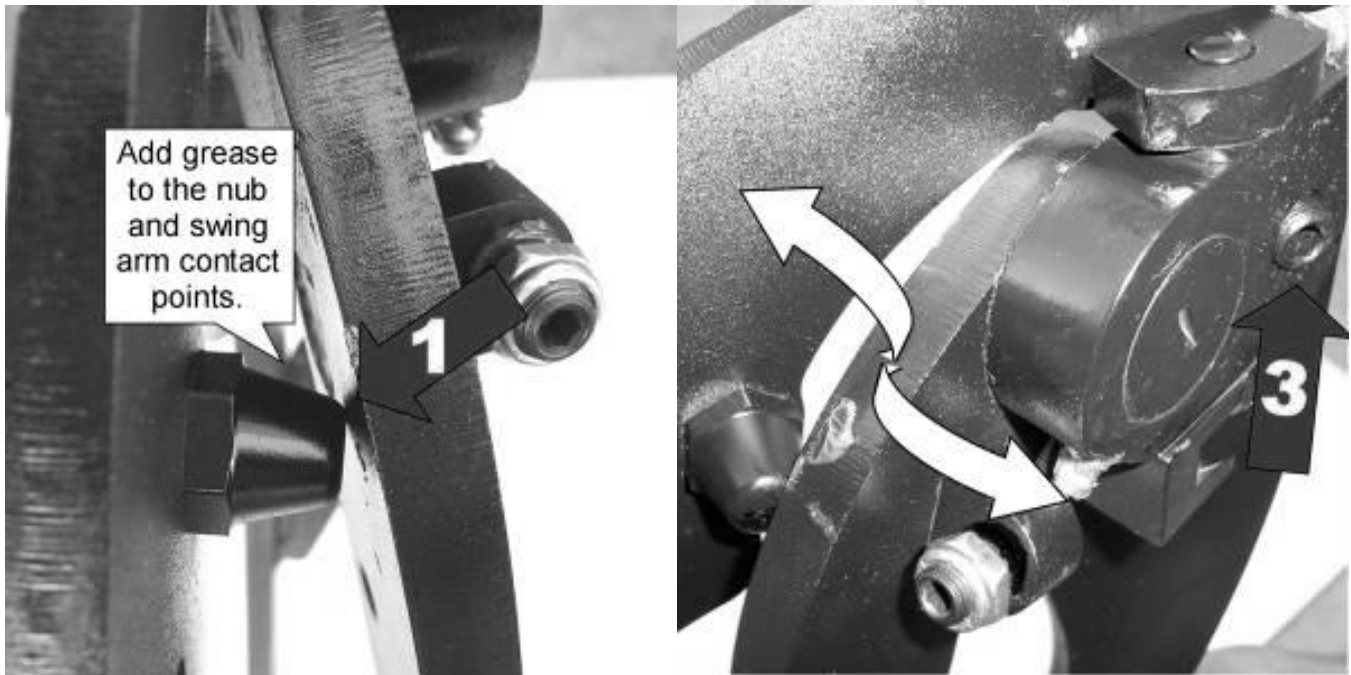
8) Install the shock.



Hint (You will need a helper to raise the door). (Slip the spherical rod mount into the spherical ball bearing (1). Using a 1/4 Allen wrench, tighten the screw into the swing arm (2). After the shock is installed secure it by installing the pin in the bottom shock end (3).*

9) After shock is installed re-install door panel and lift the door. Adjust door opening screw #3 clockwise until distance between nub and swing arm is enough so that the swing arm moves up and down freely.

Hint (Fine tune the Allen Adjustment screw (#2) to realigned striker with door. After the door is align test door by opening and closing, lifting and lowering door several times.*



Note: Do not install fender until the adjustment of the door is accurate, and the set screw is tightly secure. Also make sure everything is tight, adjustment is set and everything is Locktite.

10) Wire layout:
May sure your wires look like the picture on the right.



11) Cut the inner lip of your fender to make room for the new Vertical Doors hinge. Note: After you have cut the fender use a sander or grinder and make sure the surface is completely flat.



12) Close the door and replace the fender by reversing step 2.

Hint(Make sure the electrical wires don't get pinched enough to damage wires)*

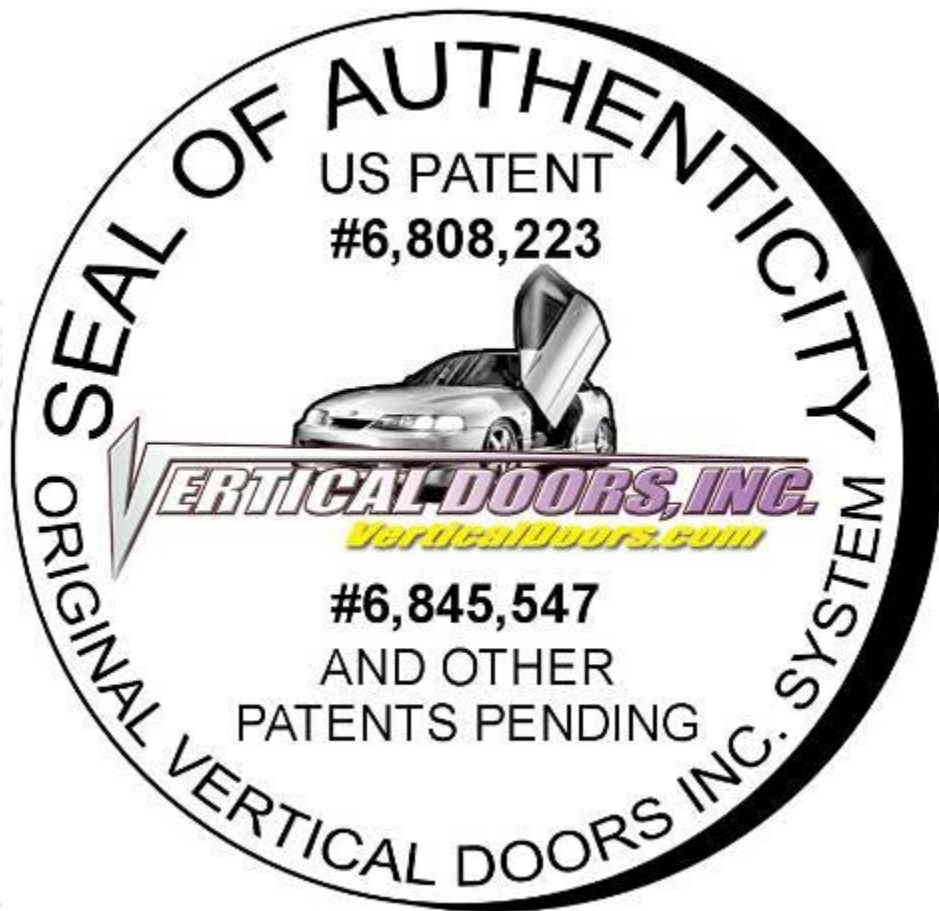
13) For the other side just follow steps 2-12.



Thank you for your purchase of the
ACURA RSX 2002-2006

VERTICAL DOORS INC. SYSTEM

Simply Uplifting



NOTE:

Vertical Doors Inc. assumes no responsibility for any damages caused by improper installation